

EAST VIEW SUBDIVISION

LOT 1
GPIN-3502-18-0511
WILLIE CARL BURGER
DB. 1048 PG. 86

LOT 2
GPIN-3502-18-0597
JAMES W. GILBERT
DB. 580 PG. 39-9

LOT 3
GPIN-3502-18-1665
ROBER DAVIS
DB. 621 PG. 350

LOT 4
GPIN-3502-18-2723
MICHAEL L. LAYNE
DB. 835 PG. 501

LOT 5
GPIN-3502-18-2881
HOWARD T. SLAYTON
DB. 1152 PG. 178

LOT 6
GPIN-3502-18-3940
DAVID F. SLAYTON
DB. 647 PG. 586

LOT 7
GPIN-3502-18-3999
PEARLINE DAVIS GLASS
DB. 1111 PG. 759

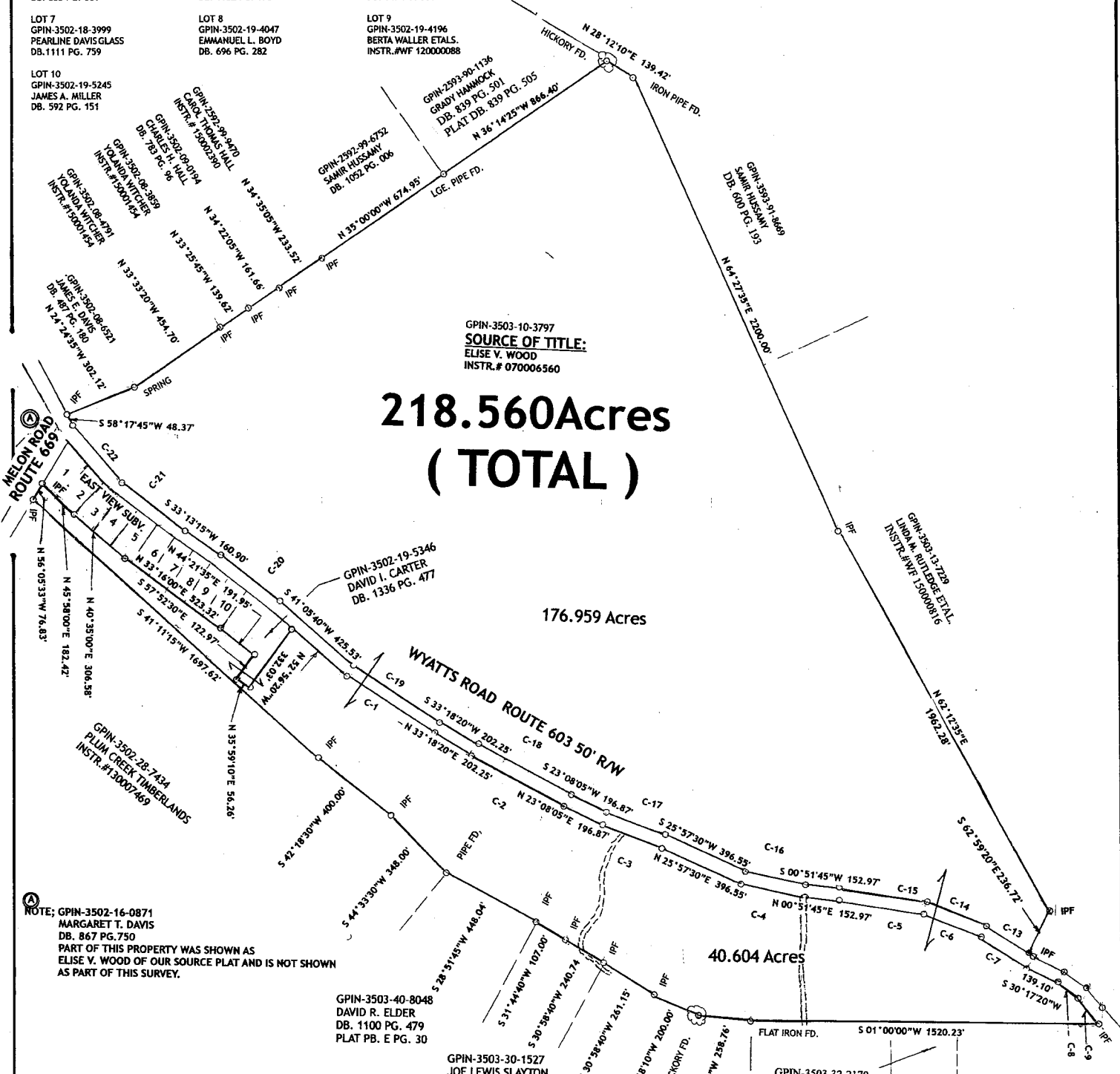
LOT 8
GPIN-3502-19-4047
EMMANUEL L. BOYD
DB. 696 PG. 282

LOT 9
GPIN-3502-19-4196
BERTA WALLER ETALS.
INSTR.#WF 120000888

LOT 10
GPIN-3502-19-5245
JAMES A. MILLER
DB. 592 PG. 151

REF: PLAT OF SURVEY BY BRUMFIELD 5/22/1934

SCALE 1" = 300'



GPIN-3503-10-3797
SOURCE OF TITLE:
ELISE V. WOOD
INSTR.# 070006560

**218.560 Acres
(TOTAL)**

176.959 Acres

40.604 Acres

NOTE: GPIN-3502-16-0871
MARGARET T. DAVIS
DB. 867 PG. 750
PART OF THIS PROPERTY WAS SHOWN AS
ELISE V. WOOD OF OUR SOURCE PLAT AND IS NOT SHOWN
AS PART OF THIS SURVEY.

GPIN-3503-40-8048
DAVID R. ELDER
DB. 1100 PG. 479
PLAT PB. E PG. 30

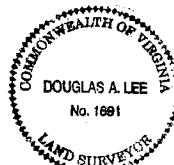
GPIN-3503-30-1527
JOE LEWIS SLAYTON
DB 1115 PG. 033
PLAT PC. 43 PG. 198D

LOT 1B
GPIN-3503-40-1803
LINDA HALL
DB. 1522 PG. 568
PC. 43 PG. 198 - D

GPIN-3503-32-2170
LEWIS C. JENNINGS
DB. 459 PG. 167

GPIN-3503-42-5467
LEWIS C. JENNINGS
DB. 197 PG. 079
PLAT PB E PG. 30

C-1	=07°47'16"	R=3344.764'	L=454.63'	CH=454.28'	CB=N 37°11'59"E
C-2	=10°10'17"	R=2566.875'	L=455.68'	CH=455.08'	CB=N 28°13'12"E
C-3	=02°49'23"	R=5361.88'	L=264.19'	CH=264.16'	CB=N 24°32'44"E
C-4	=25°05'39"	R=665.80'	L=291.60'	CH=289.28'	CB=N 13°24'36"E
C-5	=19°22'13"	R=1121.085'	L=379.01'	CH=377.21'	CB=N 10°33'22"E
C-6	=08°44'55"	R=1801.075'	L=275.01'	CH=274.74'	CB=N 24°36'26"E
C-7	=01°18'26"	R=10997.581'	L=250.91'	CH=250.91'	CB=N 29°38'17"E
C-8	=01°09'24"	R=7079.288'	L=142.91'	CH=142.91'	CB=N 30°52'02"E
C-9	=11°33'12"	R=440.99'	L=88.92'	CH=88.77'	CB=N 37°13'20"E
C-13	=01°12'15"	R=11047.581'	L=232.18'	CH=232.18'	CB=S 29°35'01"W
C-14	=08°44'54"	R=1851.075'	L=282.64'	CH=282.36'	CB=S 24°36'27"W
C-15	=19°22'13"	R=1171.085'	L=395.92'	CH=394.03'	CB=S 10°51'47"W
C-16	=25°05'39"	R=615.80'	L=269.34'	CH=267.56'	CB=S 13°24'36"W
C-17	=02°49'23"	R=5411.880'	L=266.65'	CH=266.63'	CB=S 24°32'44"W
C-18	=10°10'17"	R=2516.875'	L=446.81'	CH=446.22'	CB=S 28°13'12"W
C-19	=07°47'16"	R=3294.764'	L=447.83'	CH=447.49'	CB=S 37°11'59"W
C-20	=07°52'22"	R=2547.052'	L=349.98'	CH=349.71'	CB=S 37°09'26"W
C-21	=07°59'16"	R=2644.246'	L=368.64'	CH=368.34'	CB=S 37°12'53"W
C-22	=17°05'15"	R=1122.996'	L=334.92'	CH=333.68'	CB=S 49°45'08"W



PLAT SHOWING RESURVEY
THE PROPERTY OF
ELISE V. WOOD
STAUNTON RIVER DISTRICT,
PITTSYLVANIA COUNTY, VIRGINIA
SCALE 1" = 300' AUG. 03, 2016