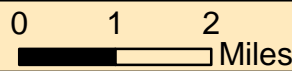
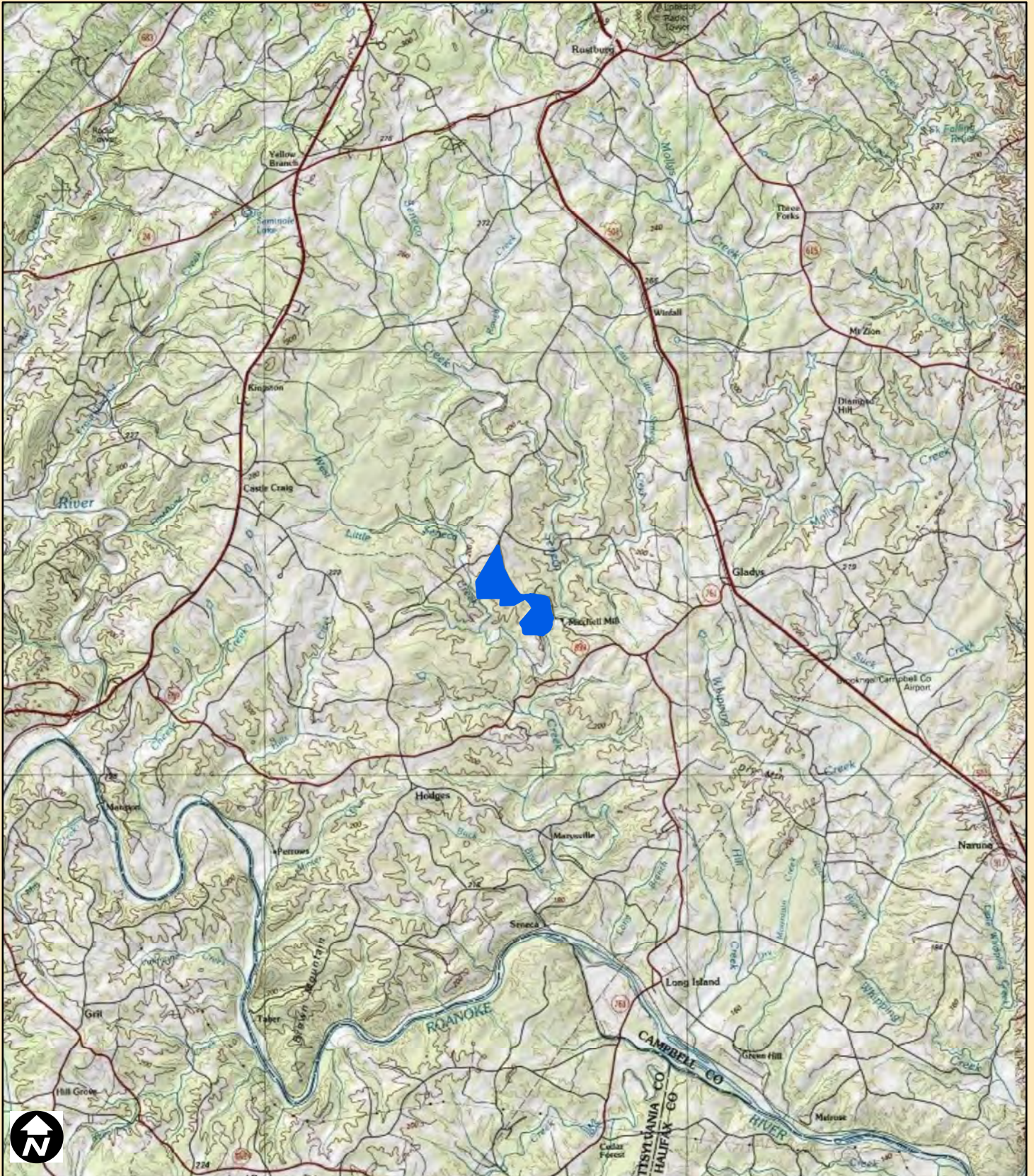
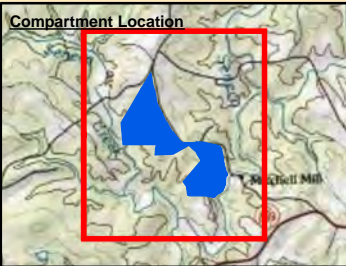
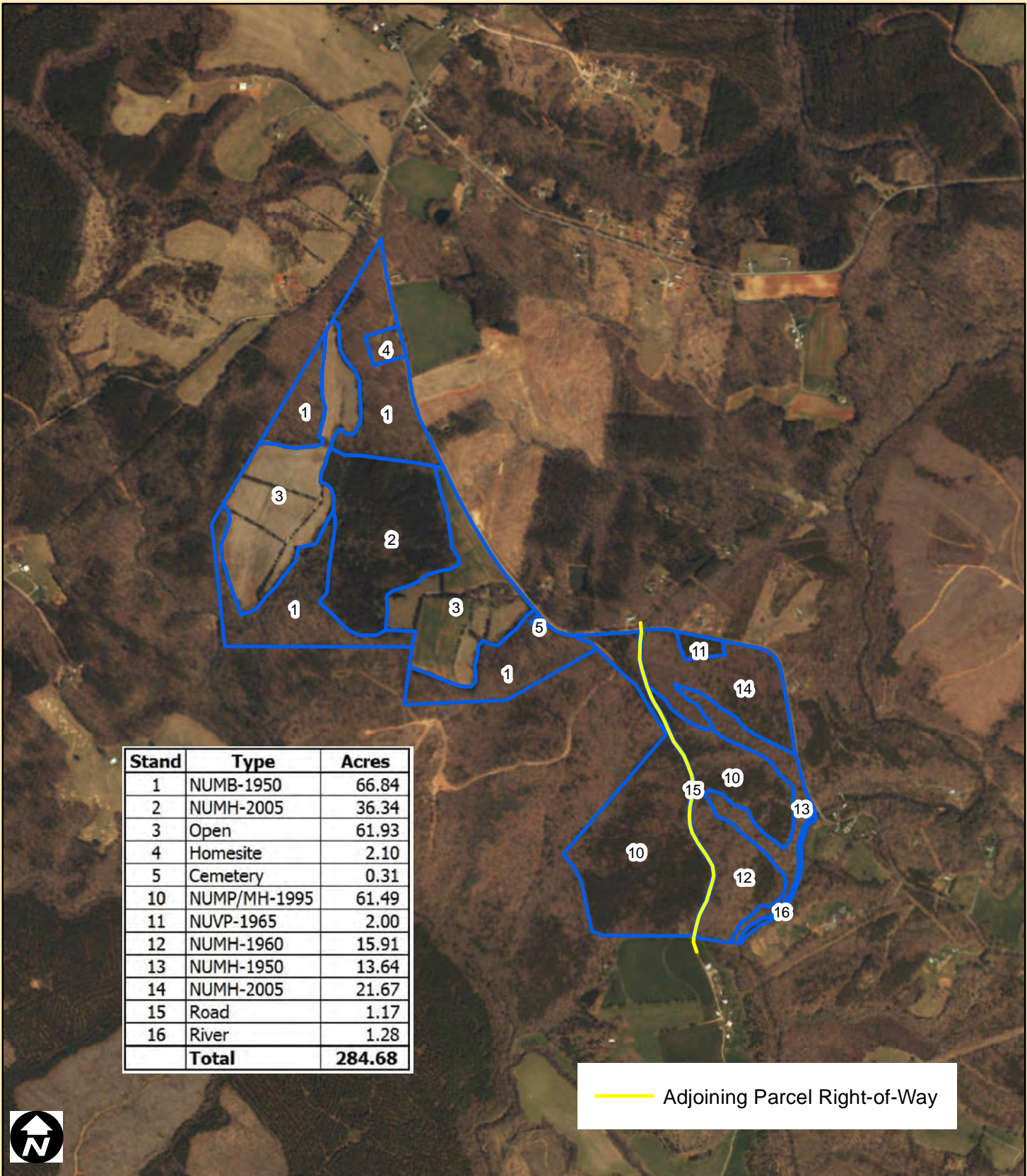


**Morris Estate
Morris Tract
Tract #15672
Campbell County, VA
284.68 Acres**





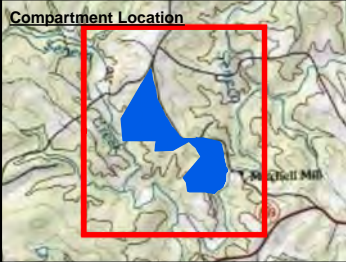
**Morris Estate
Morris Tract
Tract #15672
Campbell County, VA
284.68 Acres**



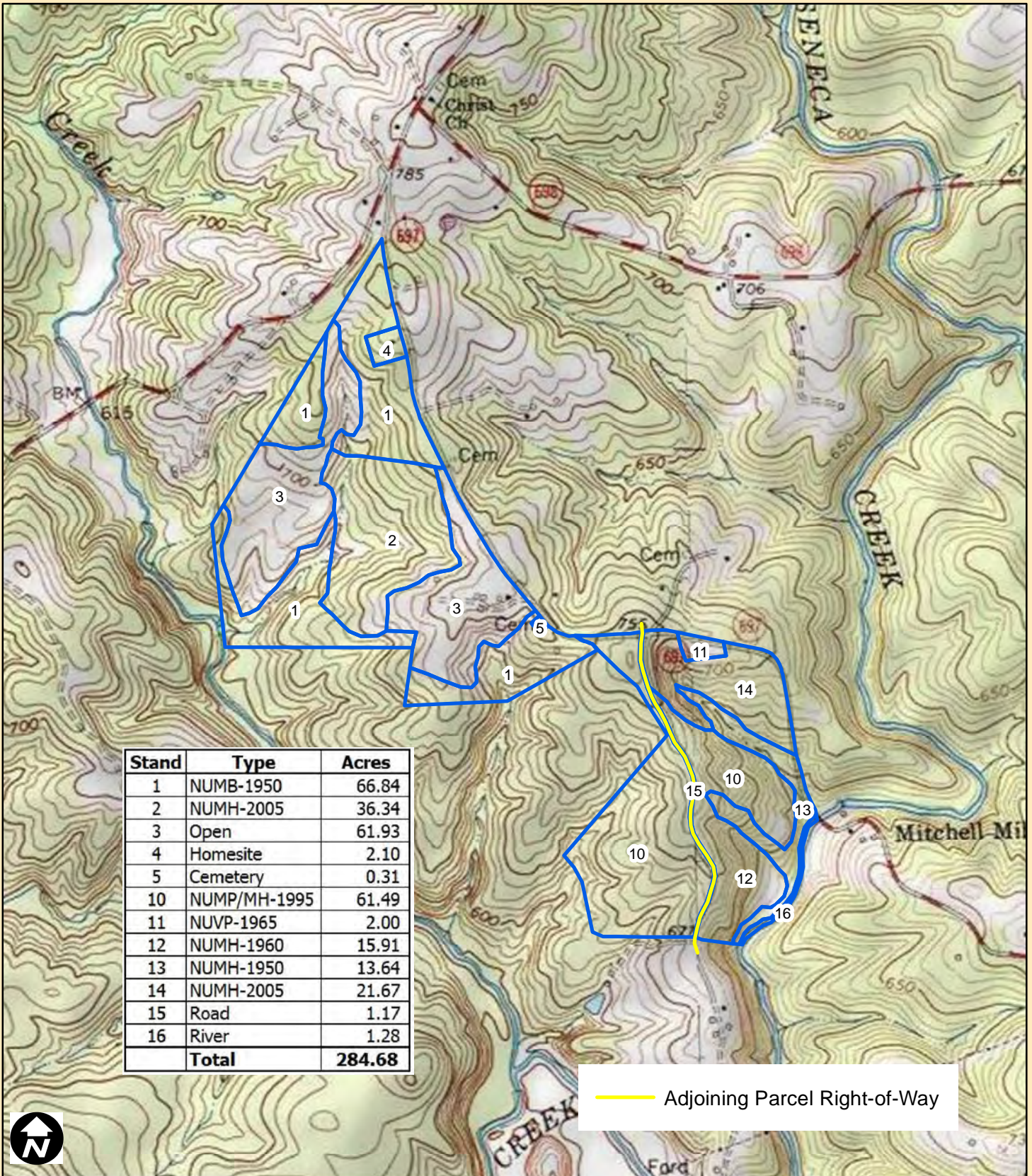
Stand	Type	Acres
1	NUMB-1950	66.84
2	NUMH-2005	36.34
3	Open	61.93
4	Homesite	2.10
5	Cemetery	0.31
10	NUMP/MH-1995	61.49
11	NUVP-1965	2.00
12	NUMH-1960	15.91
13	NUMH-1950	13.64
14	NUMH-2005	21.67
15	Road	1.17
16	River	1.28
Total		284.68

— Adjoining Parcel Right-of-Way



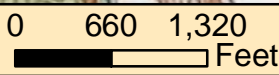


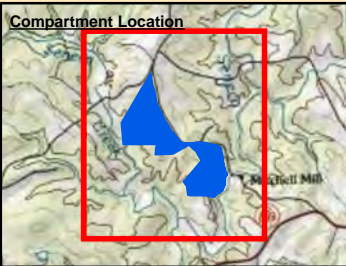
**Morris Estate
Morris Tract
Tract #15672
Campbell County, VA
284.68 Acres**



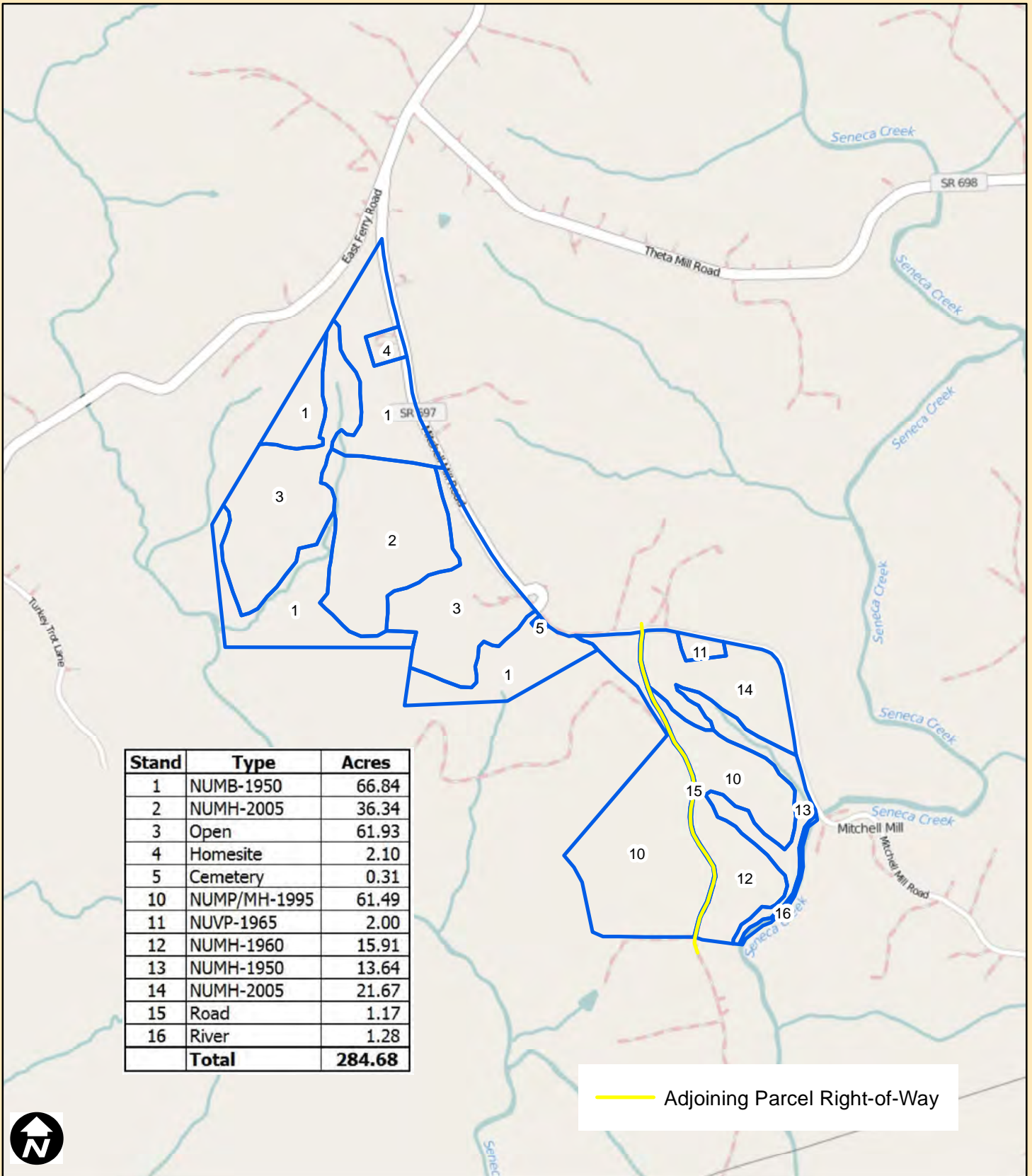
Stand	Type	Acres
1	NUMB-1950	66.84
2	NUMH-2005	36.34
3	Open	61.93
4	Homesite	2.10
5	Cemetery	0.31
10	NUMP/MH-1995	61.49
11	NUVP-1965	2.00
12	NUMH-1960	15.91
13	NUMH-1950	13.64
14	NUMH-2005	21.67
15	Road	1.17
16	River	1.28
Total		284.68

— Adjoining Parcel Right-of-Way





**Morris Estate
Morris Tract
Tract #15672
Campbell County, VA
284.68 Acres**



Stand	Type	Acres
1	NUMB-1950	66.84
2	NUMH-2005	36.34
3	Open	61.93
4	Homesite	2.10
5	Cemetery	0.31
10	NUMP/MH-1995	61.49
11	NUVP-1965	2.00
12	NUMH-1960	15.91
13	NUMH-1950	13.64
14	NUMH-2005	21.67
15	Road	1.17
16	River	1.28
	Total	284.68

— Adjoining Parcel Right-of-Way



0 660 1,320
Feet