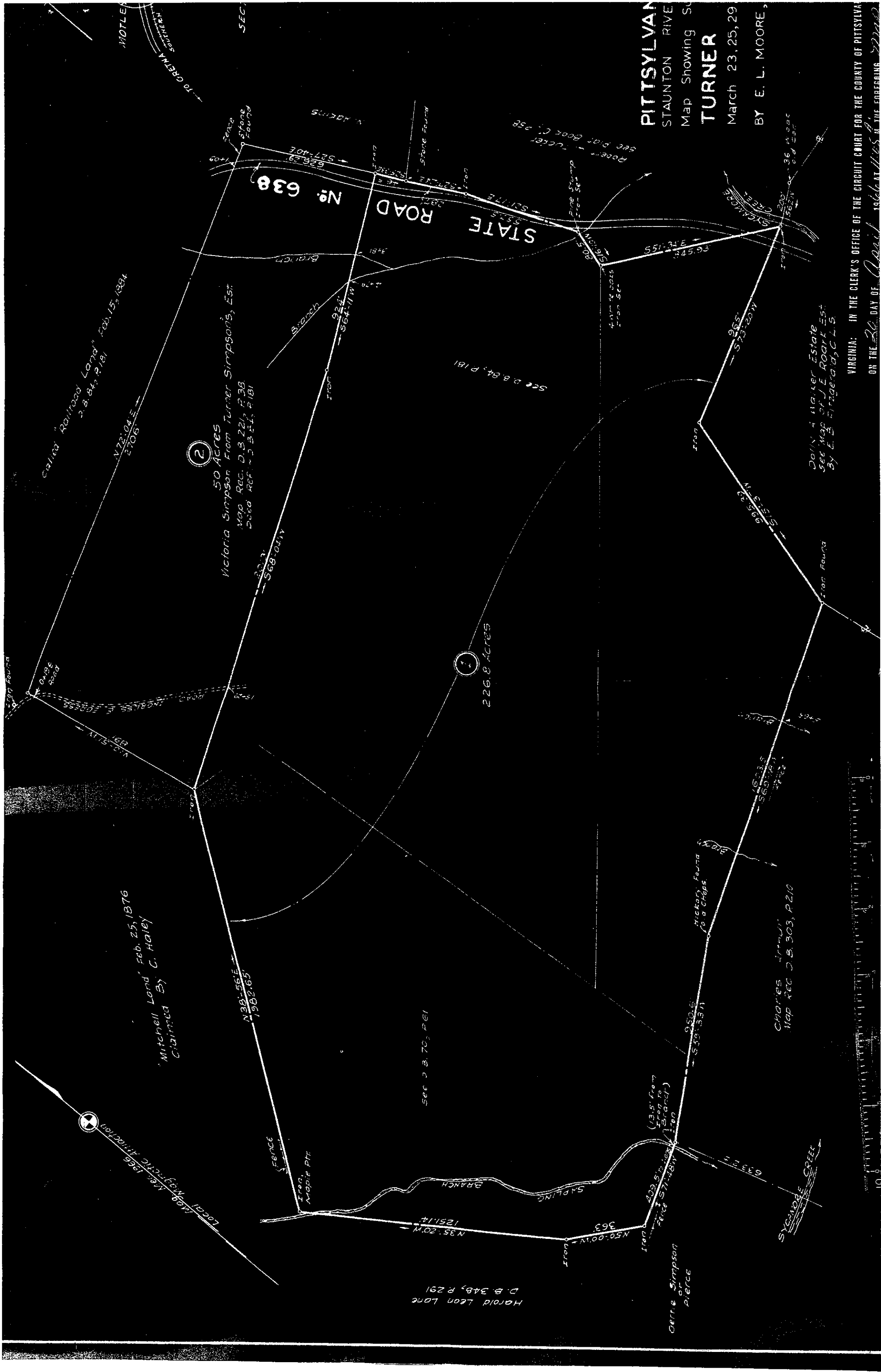


PITTSYLVAN  
 STAUNTON RIVER  
 Map Showing Su  
**TURNER**  
 March 23, 25, 29,  
 BY E. L. MOORE,

VIRGINIA: IN THE CLERK'S OFFICE OF THE CIRCUIT COURT FOR THE COUNTY OF PITTSYLVAN  
 ON THE 26 DAY OF March 1906 AT 11:55 A.M. THE FORECLOSURE



Called "Railroad Land" Feb. 15, 1884  
 D.B. 84, P. 181

Victoria Simpson From Turner Simpsons, Est.  
 50 Acres  
 Map Rec. D.B. 221, P. 38  
 See REF. D.B. 84, P. 181

Mitchell Land, Feb. 25, 1876  
 Claimed By C. Haley

Harold Leon Lane  
 D.B. 348, P. 291

Gene Simpson  
 or  
 Pierce

Charles Irons  
 Map Rec. D.B. 303, P. 210

Dolly Walker Estate  
 See Map of J.E. Roark Est.  
 By E. B. Fitzgerald, C.L.S.